



Laiv[®] VINYL

LUXURY VINYL FLOORING 라인

3MM

LVF

VINYL FLOORING



Environmental friendly



Water proof



Fire retardant



Super strong wear resistance



Easy installation



Super anti-skid



Silent noise reduction



Good thermal conductivity

laiv[®] VINYL
Wood series

Size: (W)188mm*(L)1228mm
Thickness: 3.0mm
Thickness of wear layer: 0.2mm
14PCS/CTN, 3.23SQM/CTN



T3205 Stripe beach



T3206 brazilian walnut



T3207 Classic tigerwood



T3213 Light cherry



T3218 Colonial maple

laiv[®] VINYL
Wood series

Size: (W)188mm*(L)1228mm
Thickness: 3.0mm
Thickness of wear layer: 0.2mm
14PCS/CTN, 3.23SQM/CTN



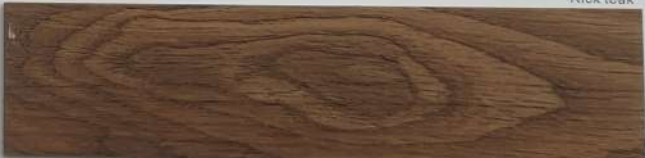
T3208 Country walnut



T3215 Natural oak



T3222 Rick teak



T3225 Elegant oak



T3226 Mark

Laiv VINYL
Wood series

Size: (W)188mm*(L)1228mm
Thickness: 3.0mm
Thickness of wear layer: 0.2mm
14PCS/CTN, 3.23SQM/CTN



T 3214

White wood



T 3210

Boston grey



T 3209

Snowy grey



T 3212

Vintage wood



T 3216

Ocean grey

Laiv VINYL
Wood series

Size: (W)188mm*(L)1228mm
Thickness: 3.0mm
Thickness of wear layer: 0.2mm
14PCS/CTN, 3.23SQM/CTN



T3211

Pine wood



T3217

Natural pine



T3220

New rumba



T3221

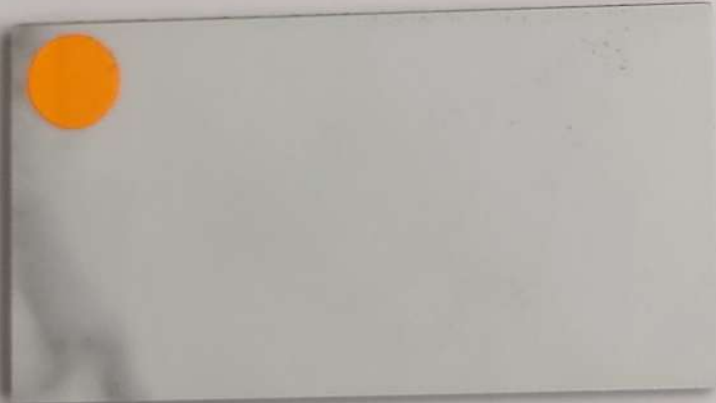
Star wood



T3219

 **Laiv[®] VINYL**
STONE series

Size: (W)304.8mm*(L)609.6mm
Thickness: 3.0mm
Thickness of wear layer: 0.2mm



T3230

Athena White



T3231

Vinive terazo



T3228

Grey stone



T3229

Grove stone



LaiV[®] VINYL

Carpet series

Size: (W)457.2mm*(L)914.4mm
Thickness: 3.0mm
Thickness of wear layer: 0.2mm
8PCS/CTN, 3.345SQM/CTN



T3232

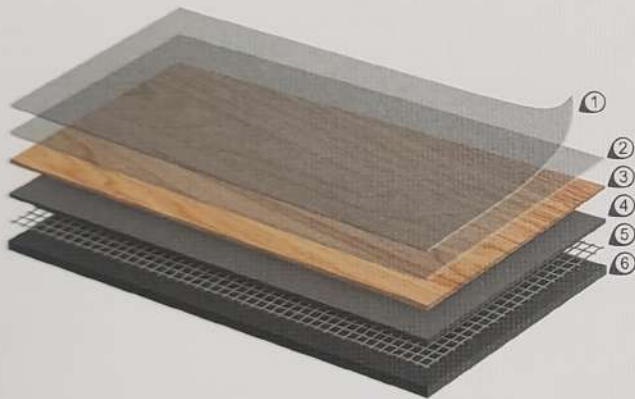
Minight dark



T3233

Harbor grey

Product Structure



1. PUR Paintcoat
2. PVC Wearlayer
3. Printing Layer
4. Middle Layer
5. Glass Fiber Layer
6. Backing Layer



Technical Data

Characteristics	Standards	Results
Length/Width	EN 427 EN ISO 24342 ASTM F2055 GB/T4085-2015	1228mm/188mm 609.6mm/304.8mm 914.4mm/457.2mm
Thickness	EN 428 EN ISO 24346 ASTM F386 GB/T4085-2015	3.0mm
Thickness of wear layer	EN 429	0.2mm
Fire Classification	EN 13501-1 GB 8624	Bf1-S1 B1
Residual Indentation	EN 433 EN ISO 24343-1 ASTM F1914 GB/T4085-2015	≤0.10mm ≤8% ≤0.10mm
Dimensional Stability	EN 434 EN ISO 23999 ASTM F2055 GB/T4085-2015	≤0.25% ≤0.16% ≤0.25%
High Temperature Warping	EN 434 EN ISO 23999 ASTM F2199 GB/T4085-2015	≤2mm
Wear Resistance	EN 660-2 GB/T4085-2015	T级
Formaldehyde Emission	ISO16000 GB 18580	ND
Color Fastness To Light	EN ISO105-B02 ASTM F1515 GB/T4085-2015	≥6 ΔE≤8 ≥6
Resistance To Chemicals	EN 423 ASTM F925 GB/T4085-2015	Class 0 No more than "slight change"
Ply Adhesion	EN ISO 24345 GB/T11982.1	PASS ≥50N/50mm
Heavy Metal	EN 71-3 ASTM F963 GB 18586	PASS
TVOC Emission TVOC	AgBB CA01350	TVOC28≤1.0mg/m ³ PASS
Castor Chair Resistance	EN 425 ISO 4918 GB/T4085	No visible damage
Antislip	DIN 51130	≥R10

